

# MASUMI

## CATALOGUE NO.8

for overseas customers



November,2017

**MASUMI CORPORATION TOKYO** is pleased to issue new catalogue **No.8** and its price list.

A special selection has been done for overseas customers.

Our catalogue is special catalogue for conservation / restoration and mounting works.

If customers require other items not included in this catalogue,  
please feel free to contact us. We will try to find them.

Sample books for Washi paper and textile are available at cost.

Order shall be made in English by letter, fax, e-mail to the address Below:

**MASUMI CORPORATION TOKYO**

4-5-2、Sugamo Toshima-ku Tokyo 170-0002 Japan

Tel: 81-3-3918-5401 Fax: 81-3-3918-8666

E mail: info@masumi-j.com

Please visit our web site [www.masumi-j.com](http://www.masumi-j.com)

Shipment shall be made by post office EMS or Federal Express.

Actual freight charge, FOB charge (2,000Yen), Bank /Credit card charge  
(6,500Yen) will be added to the total amount.

PAYMENT SHALL BE MADE IN JAPANESE YEN AGAINST OUR INVOICE BY MEANS OF  
TELEGRAPHIC TRANSFER(T/T) OR MAIL TRANSFER(M/T) REMITTANCE DIRECTLY  
TO OUR BANK AS LISTED BELOW OR BANK DRAFT ISSUED TO US DIRECTLY

BANK NAME: **MIZUHO BANK, LTD**

BRANCH NAME: **OOTUKA BRANCH**

SWIFT CODE: **MHCBJPJT**

BANK ADDRESS: **2-13-1 KITA OOTSUKA, TOSHIMAKU, TOKYO 170-0004 JAPAN**

ACCOUNT NAME: **MASUMI CORPORATION**

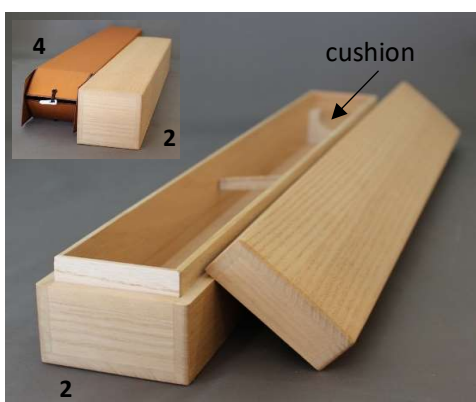
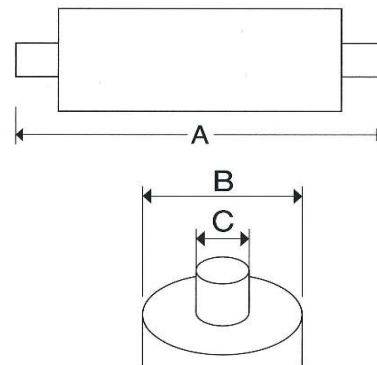
ACCOUNT NO.: **193-2232746**

Payment may also be made by credit card VISA/MASTER . In this case please  
inform us of your card number and its expire date.

Remarks: Prices are corrected at the time of printing, however we reserve the right  
to change them without notice if necessary. Customers may wish to check with  
us to confirm prices. All prices quoted here are in Japanese Yen

# KIRIBAKO (JAPANESE PAULOWNIA WOOD BOX)

- \*Our company has 54 different sizes of standard KIRIBAKO in stock.
- \*Our KIRIBAKO are made of paulownia wood. It is the best quality for preservation of important hanging scrolls, hand scrolls and valuable books and documents.
- \*Wooden boxes are covered with an outer box (tatou). It is cardboard painted with Persimmon juice (KAKISIBU).
- \*Order made KIRIBAKO are also available upon customer's requests.  
When placing an order, please measure the following sizes A, B and C exactly so as to insure a perfect size.
- \*Order made KIRIBAKO require three weeks to prepare for shipment, after receipt of a firm order together with information of sizes.
- \*KIRIBAKO for hanging scroll have cushions at both ends.  
These cushions can be removed.

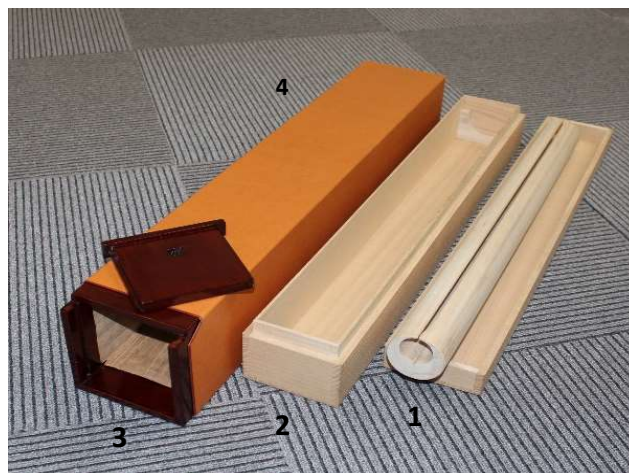


Standard Kiribako

List of standard kibako		
inside width	shaku	cm
55mm	80	24.2
	85	25.8
	90	27.3
	95	28.8
	100	30.3
	105	31.8
	110	33.3
	115	34.8
	120	36.3
	125	37.8
58mm	130	39.3
	135	40.8
	140	42.2
	145	43.8
	150	45.3
	155	47.0
	160	48.5
	165	50.0

List of standard kibako		
inside width	shaku	cm
58mm	170	51.5
	175	53.0
	180	54.5
	185	56.0
	190	57.5
	195	59.0
	200	60.6
	205	62.1
	210	63.6
	215	65.1
61mm	220	66.6
	225	68.1
	230	69.6
	235	71.2
	240	72.8
	245	74.2
	250	75.8
	255	77.3

List of standard kibako		
inside width	shaku	cm
61mm	260	78.8
	265	80.4
	270	81.8
	275	83.3
	280	84.8
	285	86.4
	290	87.8
	295	89.4
	300	90.9
	305	92.4
64mm	310	93.8
	315	95.4
	320	97.0
	325	98.4
	330	100.0
	335	101.5
	340	104.0
	350	106.0



- 1) Futomaki
- 2) Kiribako
- 3) Nijubako with laquer ware

Kiribako for 4 scrolls

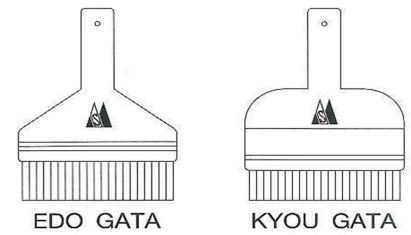


# JAPANESE BRUSHES

MASUMI supplies a range of Japanese brushes developed over the centuries to meet the demands of hyougushi (skilled conservators and scroll mounters).

All the brushes have been hand-crafted using traditional manufacturing methods with only the finest materials. There are two shapes of brushes, one is EDO-gata (triangular shape) and the other is KYOU-gata (round shape).

Customer may select either at time of order.



## PASTE BRUSH (糊刷毛)



1) Paste Brush OOEDO



2) Paste Brush SAIJOU



3) Paste Brush GOKUJOU



4) Masumi Paste Brush



5) Paste Brush SAIYOU W



6) Paste Brush GOKUJOU W



7) Masumi Paste Brush W



8) Plastic Paste Brush nylon Red



9) Plastic Paste Brush

## ASSEMBLING BRUSH (付廻し刷毛)



10) Assembling Brush OOEDO



11) Assembling Brush SAIJOU



12) Assembling Brush GOKUJOU



13) Masumi Assembling Brush



14) Assembling Brush SAIJOU W



15) Assembling Brush GOKUJOU W



16) Masumi Assembling Brush W



17) Plastic Assembling Brush nylon Red



18) Plastic Assembling Brush

## SMOOTHING BRUSH (撫刷毛)



19) Smoothing Brush GOKUJOU



20) Masumi Smoothing Brush



21) Smoothing Brush Dry soft

## SMOOTHING BRUSH (撫刷毛)



22) Shuro Brush GOKUJOU



23) Tsukuge Brush GOKUJOU

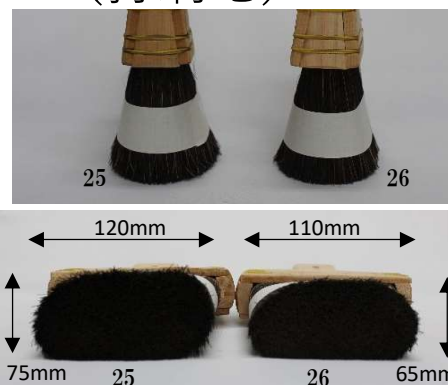


24) Plastic Smoothing Brush

## POUNDING BRUSH (打刷毛)



25) Pounding Brush SAIJOU



26) Pounding Brush GOKUJOU



27) Pounding Brush JOUTOU



28) Masumi Pounding & Smoothing Brush



29) Pounding Brush Horse hair

## WATER BRUSH (水刷毛)



30) Water Brush SAIJOU



31) Water Brush BETSUATSURAE



32) Water Brush GOKUJOU



## OTHERS (その他)



33) Squeezing Brush GOKUJOU GRAY



34) Squeezing Brush GOKUJOU W



35) Dosa Brush for sizing



36) Dosa Brush for sizing



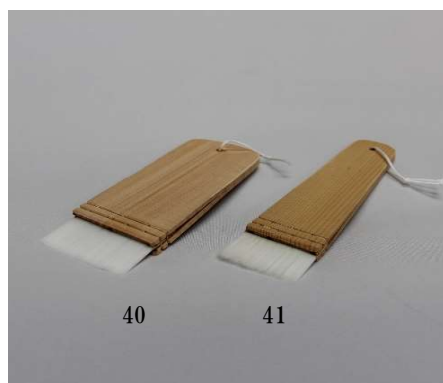
37) Small Brush for repair assembling TUYOGOSI



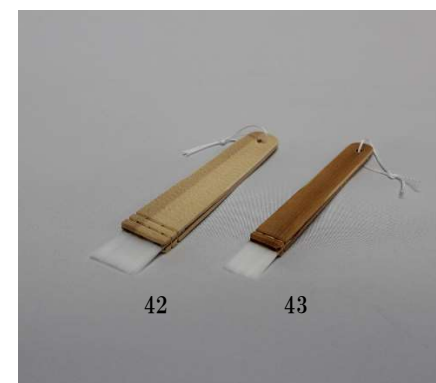
38) Small Brush for repair assembling



39) Small Brush for repair paste



40) Small Brush for repair nylon W 55  
(16553) 補修用白ナイロン55mm  
41) Small Brush for repair nylon W 40



42) Small Brush for repair nylon W 30  
(16551) 補修用白ナイロン30mm  
43) Small Brush for repair nylon W 20

Item	Description	Size/mm	Fibre/Bristle	Item	Description	Size/mm	Fibre/Bristle
1	Paste Brush OOEDO	145	horse hair	23	Tsukuge Brush GOKUJOU	145	bristle of tsuku
2	Paste Brush SAIJOU	145	horse hair	24	Plastic Smoothing Brush	180	sheep hair
3	Paste Brush GOKUJOU	145	horse hair	25	Pounding Brush SAIJOU	145	bristle of tsuku
4	Masumi Paste Brush	145	horse hair	26	Pounding Brush GOKUJOU	145	bristle of tsuku
5	Paste Brush SAIJOU W	145	sheep hair	27	Pounding Brush JOUTOU	145	bristle of tsuku
6	Paste Brush GOKUJOU W	145	sheep hair	28	Masumi Pounding & Smoothing Brush	145	bristle of tsuku
7	Masumi Paste Brush W	145	sheep hair	29	Pounding Brush Horse hair	145	horse hair
8	Plastic Paste Brush nylon Red	145	nylon	30	Water Brush SAIJOU	145	deer hair
9	Plastic Paste Brush	145	pig bristle	31	Water Brush BETSUATSURAE	145	deer hair
10	Assembling Brush OOEDO	145	horse hair	32	Water Brush GOKUJOU	145	deer hair
11	Assembling Brush SAIJOU	145	horse hair	33	Squeezing Brush GOKUJOU GRAY	145	sheep & house hair
12	Assembling Brush GOKUJOU	145	horse hair	34	Squeezing Brush GOKUJOU W	145	sheep & house hair
13	Masumi Assembling Brush	145	horse hair	35	Dosa Brush fou sizing	120	goat beard/horse
14	Assembling Brush SAIJOU W	145	horse hair	36	Dosa Brush fou sizing	30	sheep hair
15	Assembling Brush GOKUJOU W	145	horse hair	37	Small Brush for repair assembling TUYOGOSI	55	pig bristle
16	Masumi Assembling Brush W	145	horse hair	38	Small Brush for repair assembling	55	horse hair
17	Plastic Assembling Brush nylon Red	145	nylon	39	Small Brush for repair paste	55	sheep hair
18	Plastic Assembling Brush	145	pig bristle	40	Small Brush for repair nylon W 55	55	nylon
19	Smoothing Brush GOKUJOU	145	sheep & house hair	41	Small Brush for repair nylon W 40	40	nylon
20	Smoothing Brush	145	sheep & house hair	42	Small Brush for repair nylon W 30	30	nylon
21	Smoothing Brush Dry soft	145	sheep hair	43	Small Brush for repair nylon W 20	20	nylon
22	Shuro Brush GOKUJOU	145	bristle of shuro				

# EDGED TOOLS / KNIVES



1-1) Marubouchou NO.2 (10345)



2) Kogatana knife



3) Deba-bouchou



4) Kamitachi (Tamontou)



5) Kiridashi (Nakatsugu)  
21mm (8351)



6-1) Kiridashi 21mm (8350)  
6-2) Kiridashi 24mm (15426)



7) Kiridashi (Nakatsugu)  
sayatsuki (8349)



8) Maru-kawatachi (Nakatsugu)  
(8348)



9) Kawatachi (Yasubei)  
(8410)

# SAWS



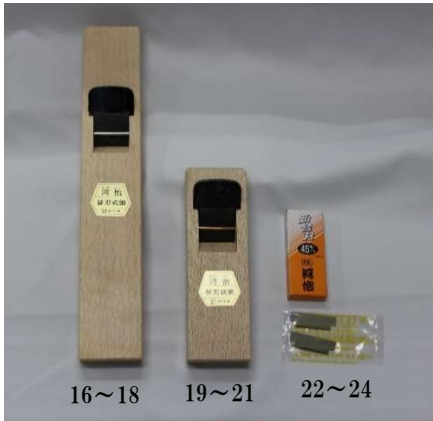
10) Panel-Saw HOSOBABA (8363)  
11) Mini Panel-Saw (8367)



13) Spare edge for item 10 (8364)  
14) Spare edge for item 11 (8368)



# PLANES



- 16) Planes KAWAYOSHI Long 45mm
- 17) Planes KAWAYOSHI Long 55mm

- 19) Planes KAWAYOSHI 45mm
- 20) Planes KAWAYOSHI 55mm

- 22) Planes Spare edge for item 16 & 19 (10 units)
- 23) Planes Spare edge for item 17 & 20 (10 units)

# HAMMERS

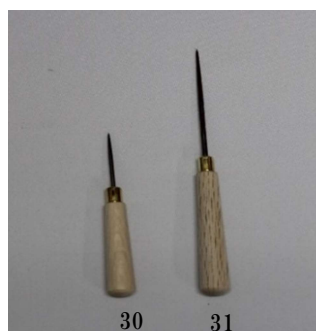


- 25) Masumi Gen-nou (8371)
- 26) Hakkaku Gen-nou 185g (8373)
- 27) Kyo-ji Kanazuchi 21mm (8369)

# MEUCHI (awl / eyeleteer)



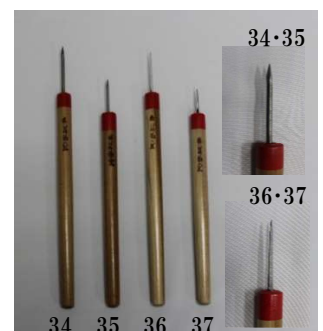
29) Senmai toshi Kokutan



- 30) Senmai toshi Small  
120mm (8388)
- 31) Senmai toshi Large  
170mm (8387)

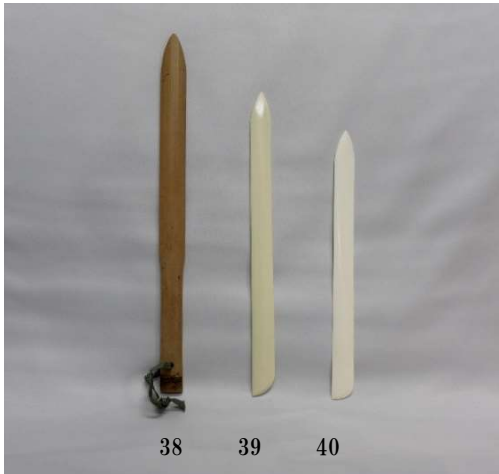


- 32) Kujiri Small  
105mm (8392)
- 33) Kujiri Large  
130mm (8391)

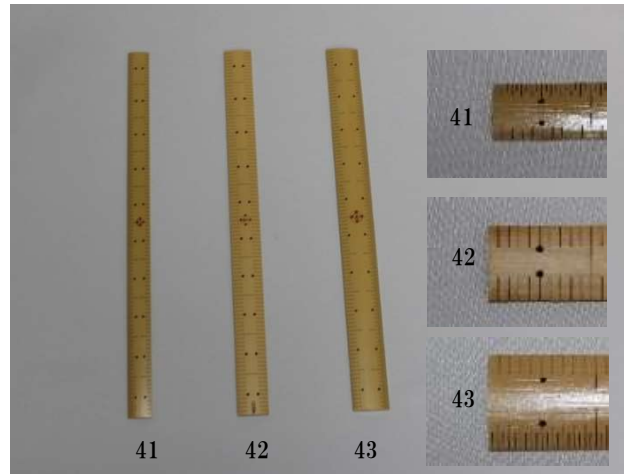


- 34) Mitsume-kiri Large  
320mm (8427)
- 35) Mitsume-kiri Small  
280mm (8428)
- 36) Yotsume-kiri Large  
310mm (8425)
- 37) Yotsume-kiri Small

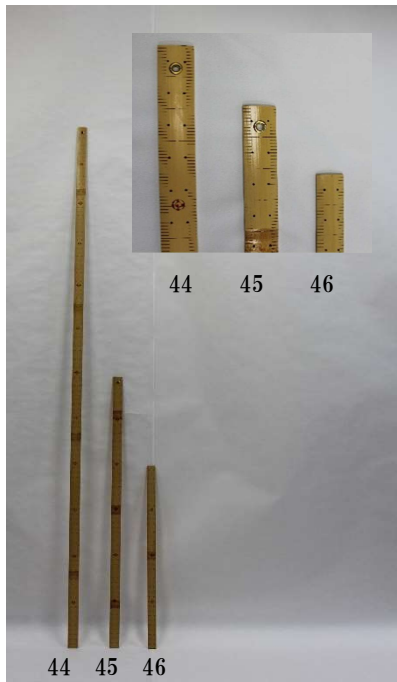
# SPATULA / RULER



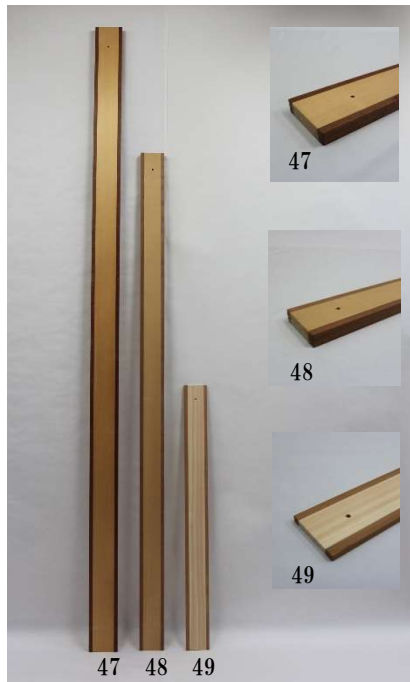
38) Bamboo spatula (8643)  
39) Plastic spatula (8644)



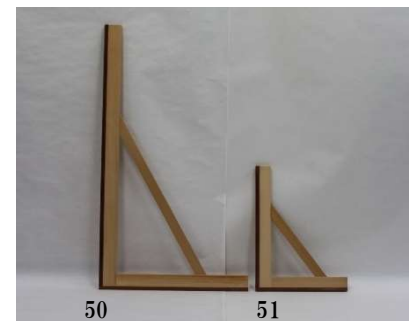
41) Wooden ruler 1尺 30cm 片側5厘目 細 (8631)  
42) Wooden ruler 1尺 30cm 1分目 (8629)



44) Wooden ruler 6尺 182cm (8626)  
45) Wooden ruler 3尺 91cm (8627)



47) Wooden straight edge 242cm (8613)



50) Wooden square 48cm x 97cm (\*8465)



52-1) Plastic set square 70 x 60 x 35cm (10303)

52-2) Plastic set square 92 x 80 x 46cm



53-1) Plastic straight edge 242cm (14539)  
53-2) Plastic straight edge 200cm (16658)  
53-3) Plastic straight edge 136cm (8620)  
53-4) Plastic straight edge 100cm (16657)



54-1) Kakezashi 91cm (8640)  
54-2) Kakezashi 60cm (8642)

# OTHERS



1) Shamoji (8612)



2) Tawashi (16516)



3-1) Sieve horse hair 24cm (5892)



3-2) Sieve nylon 24cm (5894)



4) Wooden paste bowl 2 in one set



5-1) Wooden paste bowl 36×8.7cm (10368)

5-2) Wooden paste bowl 33×8.7cm



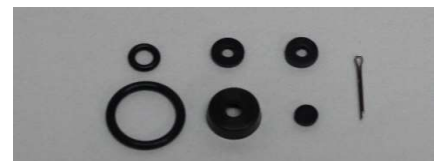
6) Plastic paste bowl 2 in one set



7-1) Water sprayer 1000cc (5895)



7-3) Spare nozzle for water sprayer

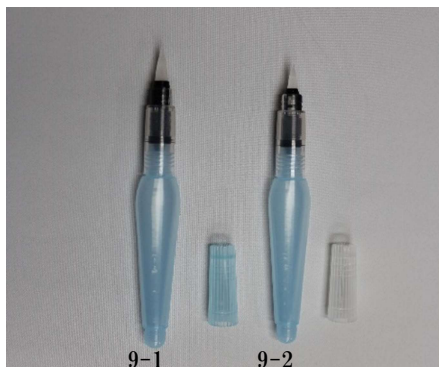


7-4) Set of spare part for water sprayer 1000cc (5899)

7-5) Set of spare part for water sprayer



8) Water sprayer pc DIA 1000cc (5897)



9-1) Water pencil FRH-B (15138)

9-2) Water pencil FRH-M (15139)



10-1) Urazuri bead pc (5929)



# OTHERS



11) Incense (Bouchu Kou) 10pcs



12-1) Ibota wax 150g (5937)  
12-2) Ibota wax 75g (5936)



13-1) Dosa liquid for sizing 500cc (5976)



14) sprayer for sizing "NIZIMAZU"



15) sprayer for sizing "CHIRAZU" (5973)



16) sprayer for sizing "GRAFIX" (5972)



17-1) Dies "YASHA NO MI" 500g



18-1) Dies "KIHADA" 500g (5985)



19) FUNORI 20g (5966)

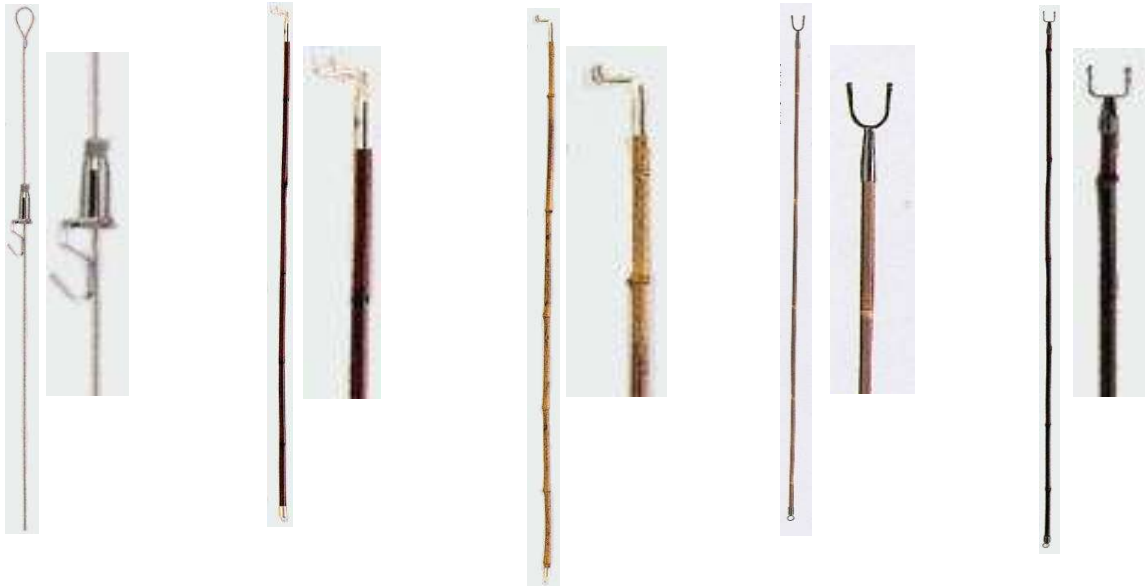


20) Sanzenbon nikawa glue100g



21-1) Dry powder wheat starch 1kg (5970)  
21-2) Dry powder wheat starch 25kg (5967)

# JIZAI / YAHAZU



1) Stainless steel wire    2) Bamboo (susutake)    3) Bamboo (sinachiku)    4) Bamboo (yatake)    5) Bamboo (kurotake)

# KARIBARI (Drying Board)



1-1) Kakishibu (persimmon juice) 21 ℓ (5945)

1-2) Kakishibu (persimmon juice) 4 ℓ



2) Kakishibu (persimmon juice) 1.8 ℓ

3) Karibari 180cm × 90cm × 2.7cm

4) Frame for Karibari mounted one

# MASUMI JAPANESE WASHI PAPER

FOR RESTORATION vol.VI 2013 AUG



Masumi handle the various handmade , machinemade washi paper such as restoration, conservation and mounting works, drawings, calligraphy, for artist, decorative paper for wall , Fusuma(sliding door)'byoubu, and shoji screen.

Washi paper have been conveyed to JAPAN through Silk Road and have been developed over 1500 years and they are very important things for daily life. We Masumi try to find it's possibility for our future life.

## SAMPLE BOOKS



1) Masumi Japanese washi paper for restoration vol. VI 2013 AUG.



2) Yamato washi vol.III



## CORPORATE PROFILE

MASUMI CORPRAION

ADDRESS : 4-5-2 SUGAMO,TOSHIMA-KU,TOKYO 170-0002 JAPAN  
TEL:81-3-3918-5401 FAX:81-3-3918-8666

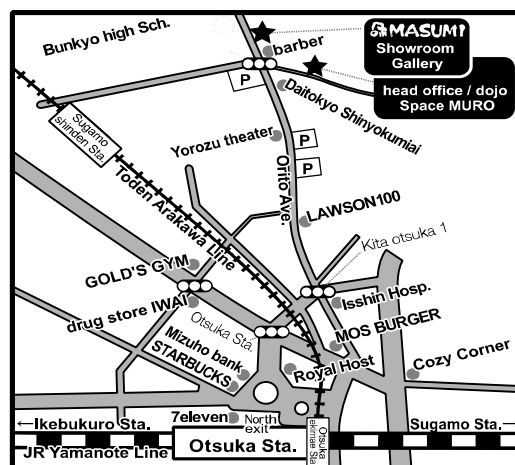
ESTABLISHED : DECEMBER 2ND, 1968

ACTIVITIES : SUPPY OF  
TEXTILES FOR HANGING SCROLLS,FRAMES AND FOLDING SCREENS  
WASHI PAPER FOR MOUNTING WORKS,REPAIR AND CONSERVATION  
WASHI DECORATIVE PAPER ,WOODEN DOXES,MOUNTING TOOLS,BRUSHES  
HANGING SCROLLS,HAND SCROLLS,FOLDING SCREENS,SLIDING DOORS  
FRAMES FOR JAPANESE ARTS AND ANTIQUITIES

THE PRODUCTION OF  
TRADITIONAL AND MODERN STYLE HANGING SCROLLS,FRAMES AND  
FOLDING SCREENS

OPERATING A CULTURALSCHOOL  
TEACH AND TRANSFER JAPANES TRAITIONAL TECHNIQUE OF THE ART OF  
RESTORING AND MOUTING WORKS.  
TEACH HOW TO MAKE HANGING SCROLLS AND FOLDING SCREENS

ORGANING AND PLANNING  
EXHIBITIONS FOR GROUPS OF ARTISTS,CALLIGRAPHERS INVOLVED IN  
MOUNTING WORKS





## **MASUMI CORPORATION**

4-5-2 Sugamo, Toshima-ku, TOKYO 170-0002 JAPAN

TEL:81-3-3918-5401 FAX:81-3-3918-8666

[www.masumi-j.com](http://www.masumi-j.com)

e-mail:[info@masumi-j.com](mailto:info@masumi-j.com)